



**CANAL DE PANAMÁ**

## **Río Indio: A sustainable project with a human approach Panama Canal**

# A Canal for the Future... to continue serving humanity, Panamanians...



*“All that is valuable in human society depends upon the opportunity for development accorded the individual”*

Albert Einstein





## Opportunities to promote development

- Strengthen spaces for communication, participation and consultation.
- Build a common vision with the communities about socioeconomic and environmental values
- Strengthen local capacities.
- Minimize social and environmental risks for future phases of the project.



Promote lessons learned in every direction: technicians, authorities, communities... learning from each other

# Projects for local sustainable development - With the project and in the long term

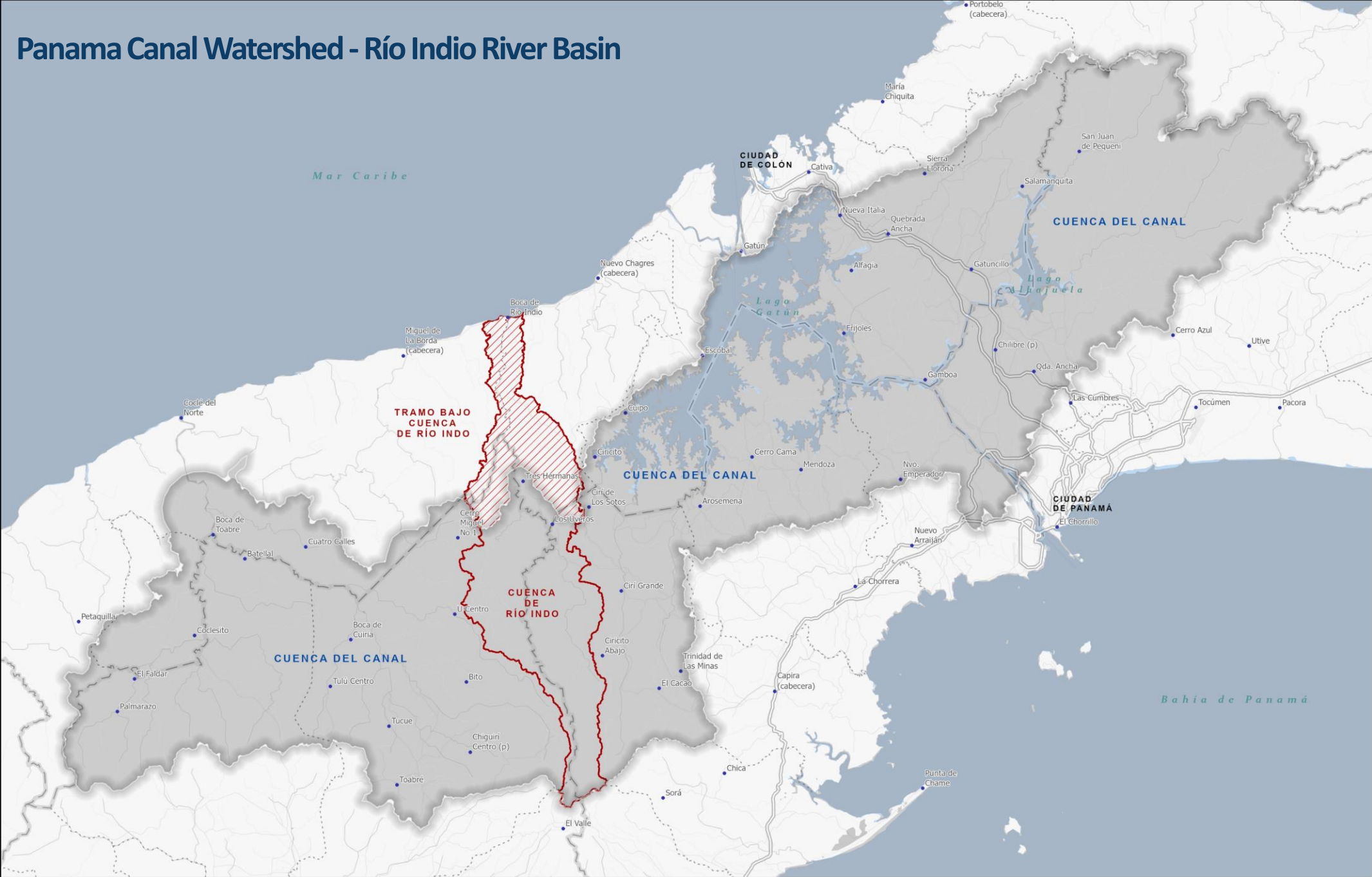
- Improvements or construction of rural aqueducts and sanitation.
- Cadastre and land titling program
- Agroforestry, silvopastoral, and family farming projects.
- Environmental education programs
- Training center
- Photovoltaic systems in schools.
- Training to strengthen job opportunities (masonry, ecotourism, electricity cooking, others)
- Strengthening local organizations and institutions.
- Agribusiness, support for marketing, ecotourism, and others.
- Early warning alert systems

## Integrated and sustainable watershed management plan





# Panama Canal Watershed - Río Indio River Basin



# Project Responsibilities and Outcomes

Manage water resources with a sustainability focus – People.

Ensure long-term water supply for the population and Panama Canal operations.

Conduct a process that involves working and planning with the people

## Sustainable Local Development





## Building long-term relations and collaboration with communities

- *Active listening and empathy.*
- *Respectful and continuous dialogue with stakeholders.*
- *Promote informed participation from the early stages and throughout the project by providing timely communication on key actions and activities.*
- *Address any inquiries, concerns, or questions with **accurate and truthful information** to minimize speculation or community worries.*
- ***Never underestimate** the community's feelings regarding our actions.*



# Project socioeconomic and environmental strategy

Improve socioeconomic conditions  
in the communities

Strengthen the capabilities of  
local organizations,  
institutions, and authorities to  
manage their development







## Sustainability is...

- *People with opportunities*
- *Empowered communities*
- *Drivers for positive change*
- *Water security*
- *Ask the people...*





Thank you!