

An aerial photograph of the Porto do Açu port in Rio de Janeiro, Brazil. A large red ship, the 'SCARLETT MAINE', is docked at a pier. The ship has a white superstructure and a green and yellow helicopter landing pad on its deck. Several tall cranes are visible on the pier. In the background, the port facility extends into the water, with various buildings and structures. The surrounding landscape is flat and industrial.

# *Porto do Açu (Rio de Janeiro, Brazil)*

*ENERGYTRANSITION: HOWTOACHIEVE NET-ZERO CO<sub>2</sub> EMISSIONS (TOC)*

*October 2024*

The logo for Porto do Açu, featuring a stylized orange and red graphic above the text 'PORTO DO AÇU' in white capital letters, all enclosed within a grey circular border.

PORTO  
DO AÇU



# Vinicius Patel

## Port Administration Director

- +15 Years experience in port, oil & gas, Logistics industry
- Head of Maritime Management, infrastructure QSHE, Institutional Relations, Sustainability



Email: [vinicius.patel@portodoacu.com.br](mailto:vinicius.patel@portodoacu.com.br)



Who *we are*

## *Prumo Logística*

holding responsible for the  
**development of Port of Açu**  
through **partnerships with**  
**leading global players**



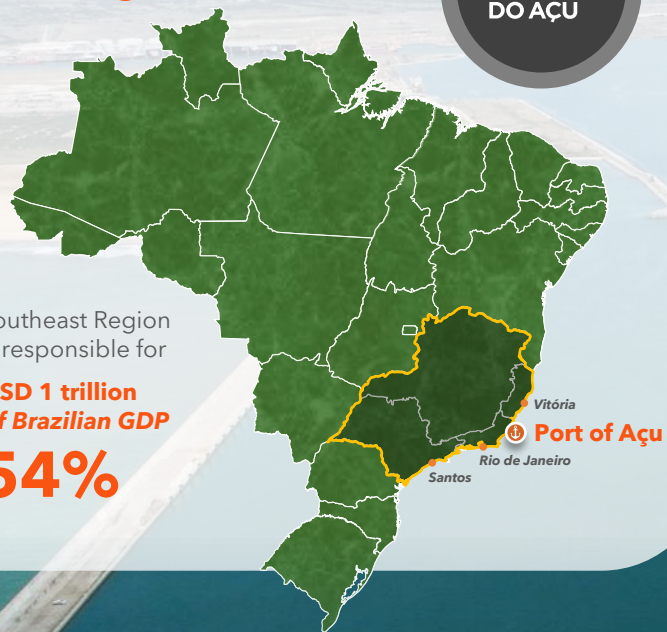
## Strategic Location



Southeast Region  
is responsible for

USD 1 trillion  
of Brazilian GDP

**54%**



# Private and innovative enterprise

in the Brazilian port and  
industrial sector

**87 Mtons**

cargo handling in 2023

★  
**2<sup>nd</sup> Brazilian Port**

**6737 Vessels**

operated in 2023

★  
**1<sup>st</sup> Brazilian Port**

**11**

Private Terminals with  
draft up to **21.7m**

**40km<sup>2</sup>**

Caruara Reserve - Private  
Conservation Unit -  
Protected area

**3 GW**

LNG gas-fueled park

**7K**

Direct  
workers



# PORT-INDUSTRY INTEGRATED PLATFORM



IRON ORE



PETROLEUM



MARINE FUELS



MULTICARGO TERMINAL



OIL AND GAS INDUSTRY



LNG AND NATURAL GAS





W H O   W E   A R E


**Responsible for the development of the largest private port-industry complex in Brazil.**

## OUR MISSION



Develop an industrial port enterprise with integrated, competitive and sustainable infrastructure.

## OUR VISION



To be recognized as the 'one & only' port for energy transition in Brazil.

## OUR PURPOSE



To help the world to reduce its carbon footprint and accelerate the development of Brazil's best assets.



# SUSTAINABILITY

Sustainable business development based on the  
**Best Environmental, Social and Governance (ESG) practices**



## SAFETY

Safe operations



## ENVIRONMENT AND CLIMATE

Environmental  
management and  
Biodiversity  
conservation



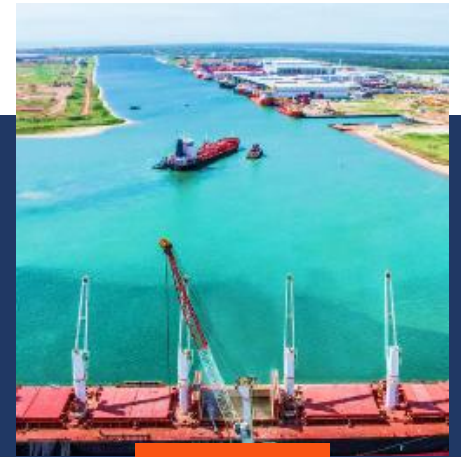
## PEOPLE AND COMMUNITY

Generation of shared  
value



## GOVERNANCE & COMPLIANCE

Commitment to ethics  
and integrity



## SUSTAINABLE BUSINESS

Efficiency, circularity and  
low carbon



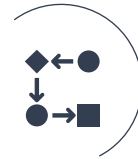
# PORTO DO AÇU ENERGY HUB

GHG emissions reduction,  
increased resilience, and  
competitiveness



## EFFICIENCY

**Operational and energy efficiency**, leveraging synergies within the port complex, optimized infrastructure, and promoting a circular economy.



## SOLUTIONS FOR LOGISTIC CHAIN

Platform for **energy solutions, low-carbon services, and fuels**, contributing to the reduction of the carbon footprint of the supply chain.



## CLEAN ENERGY AND FEEDSTOCK

**Increase renewable energy and clean fuels in the energy mix**, while gradually reducing the percentage of conventional fuels, feedstocks, and materials.



# DECARBONIZATION PLAN



## Our Vision

To be recognized as the 'one & only' port for energy transition in Brazil.



## Our Ambition

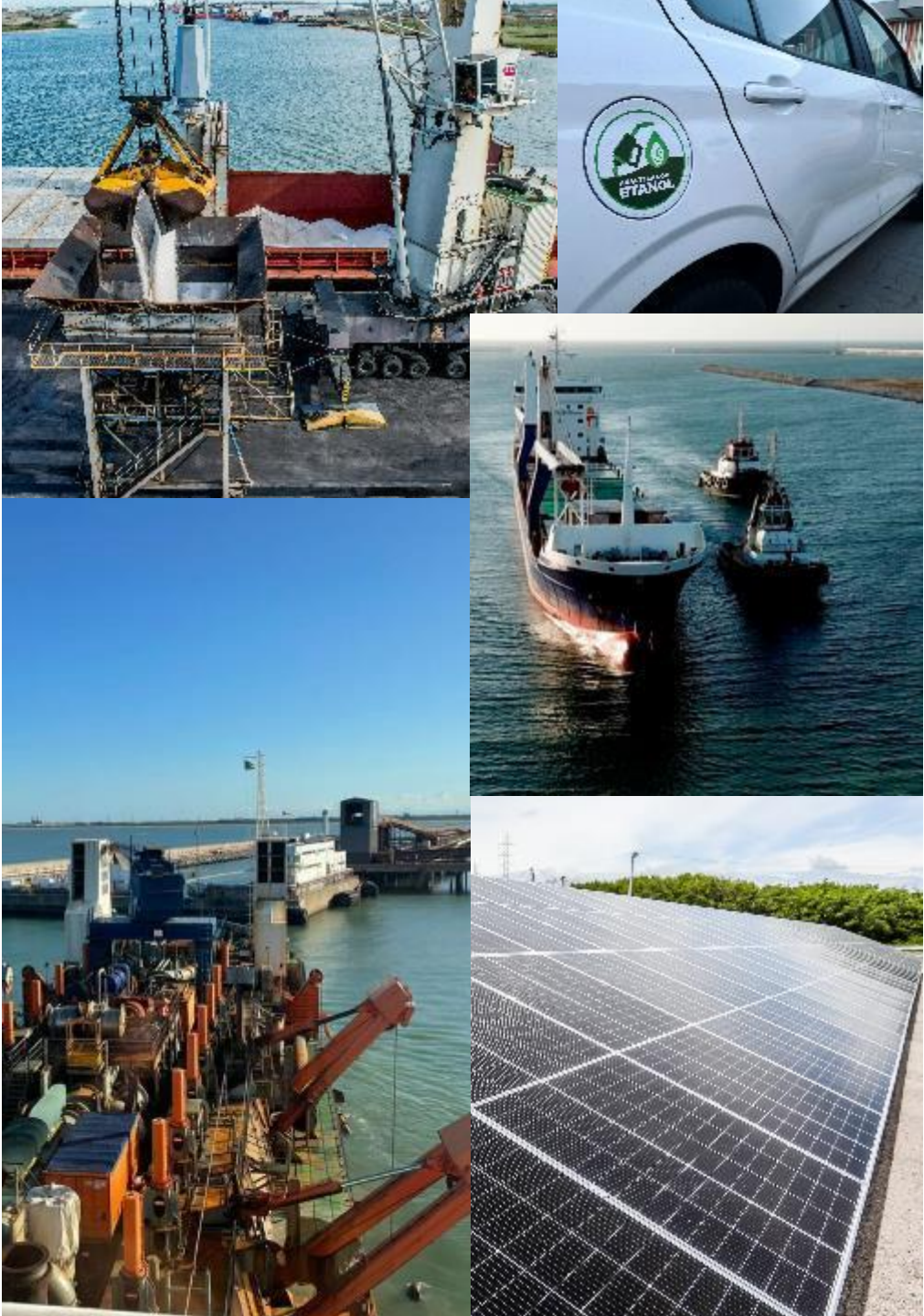
Net zero by 2050



## Our Plan

- **By 2030:** **50% reduction** on carbon footprint
- **By 2040:** **80% reduction** on carbon footprint
- **By 2050:** Carbon neutron





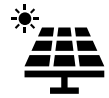
# INITIATIVES

## for decarbonization



### Electrification

vehicles and equipment's



### Renewable energy

Scope 2



### Alternative fuels

bio and e-fuels



### Waste management

Reduction and circularity



### Shore power

for vessels operation at port area



### Dredging

Efficiency, circularity and alt. fuels



### Tugboats

efficiency, electricity and biofuels



### Port Incentives

For sustainable vessels



# Port of Açu *Energy Hub*

NEW ENERGIES



HYDROGEN



INDUSTRIES

BIOMASS



BIOGAZ



SOLAR



NATIONAL GRID



H2 CLUSTER



AMMONIA



LOW CARBON  
FUELS



GREEN STEEL



FERTILIZERS



FUELS



MARITIME  
DECARBONIZATION

OFFSHORE WIND





# IAPH work on sustainability



Vinicius Patel

IAPH – Vice President for Central & South Americas



# World Ports Sustainability Program



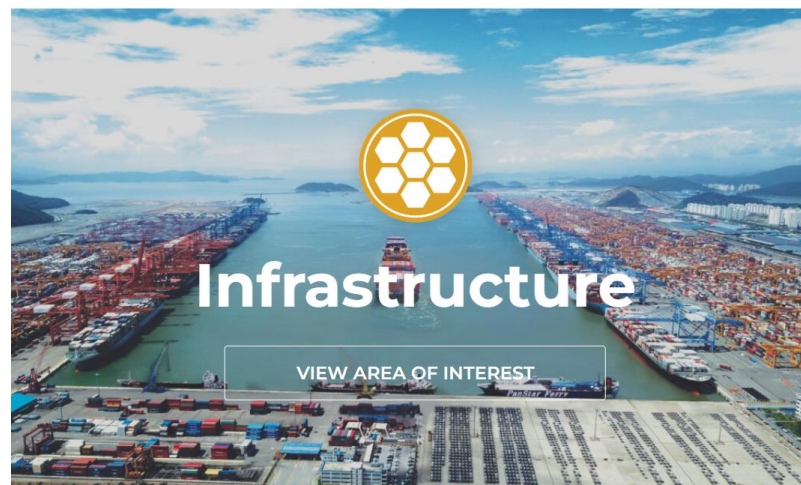
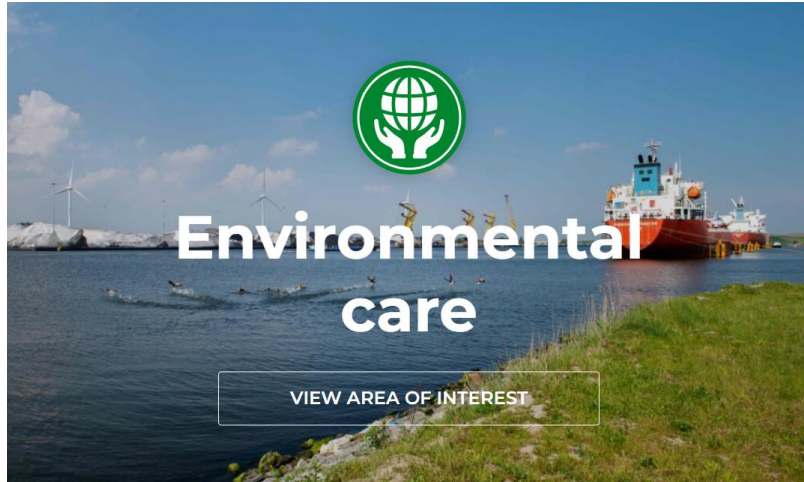
Mission : To integrate the 17 UN SDGs in port governance





# WPSP areas of interest

14





# WPSP Database of sustainability projects

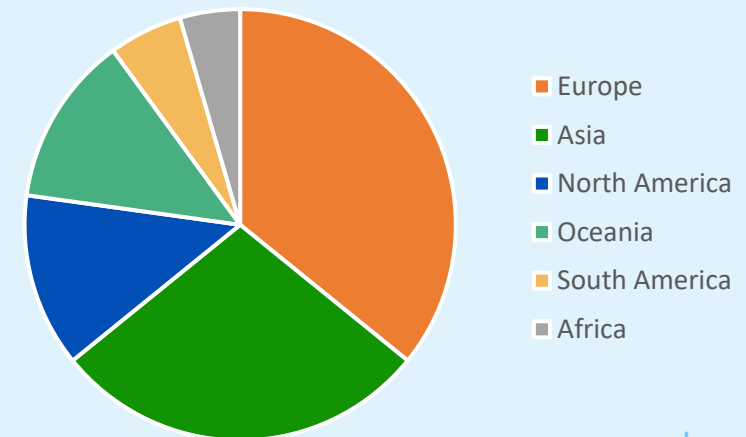


401  
PROJECTS

160  
PORTS

65  
COUNTRIES

Number of projects per Continent







Together we are **competitive**  
Together we are **sustainable**  
Together we are **Porto do Açu**

Get to know the  
port in a 360° tour

Açu Experience | EN

